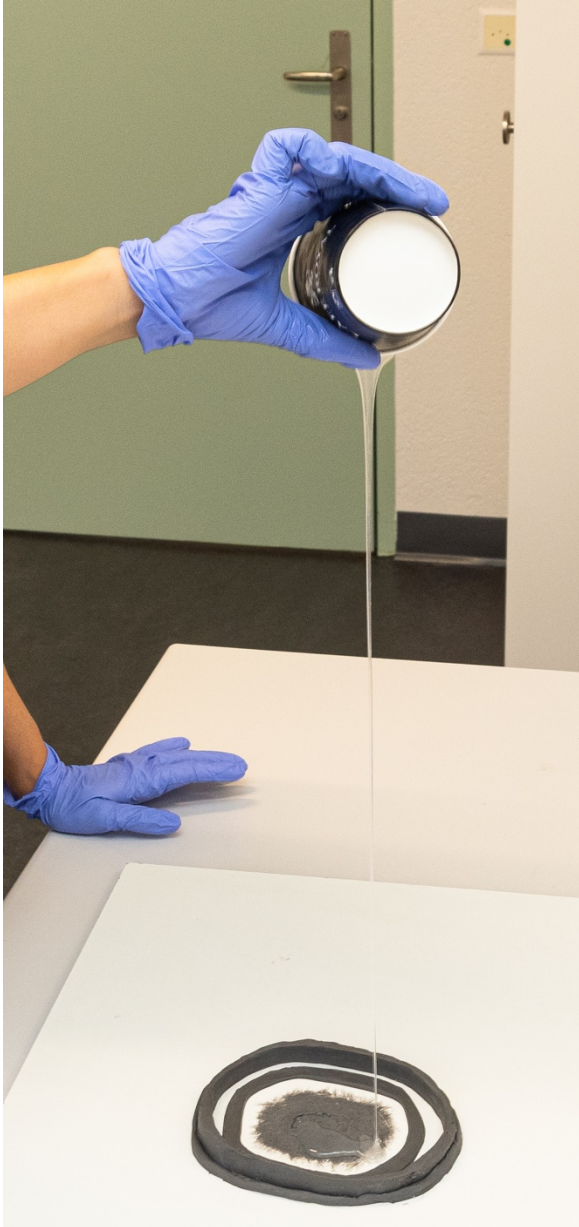


## **Attachment 1: Supplementary material**



**3)** Pouring the silicone



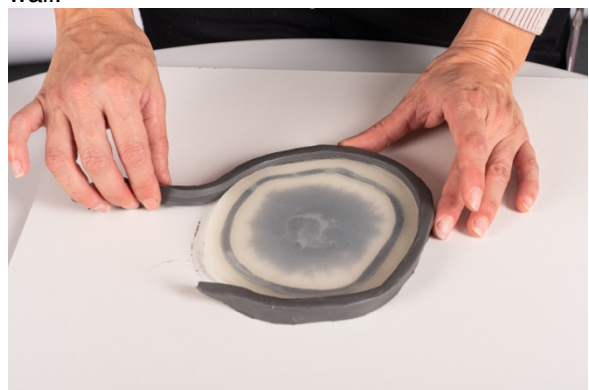
**1)** Positive model made from modelling dough.



**2)** Added two walls, ready for pouring.



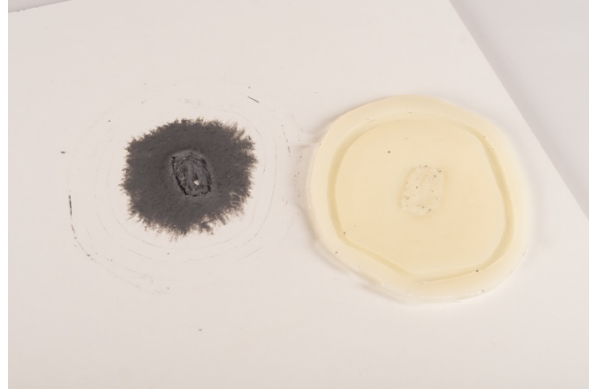
**4)** The silicone covers the inner but not the outer wall.



**5)** Removing the wall



6) Removing the (negative) silicone cast mould.



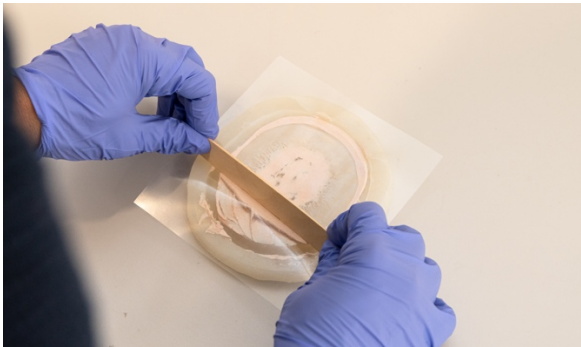
7) Positive and negative.



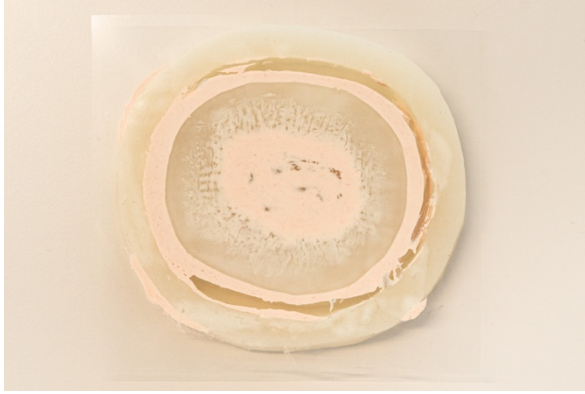
8) Material for the transfer.



9) Filling in the transfer paste.



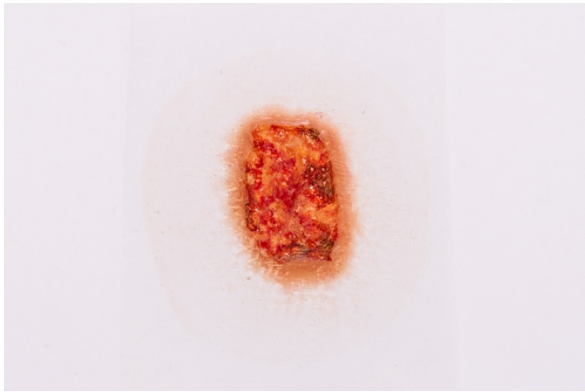
10) Having added the release film, the transfer paste is spread.



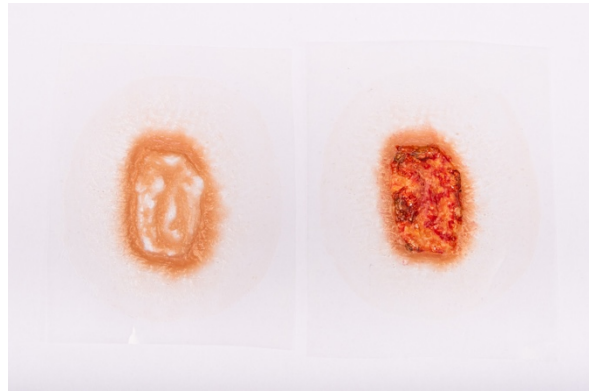
**11)** Ready for deep freeze.



**12)** Transfer has been removed, ready for colouring



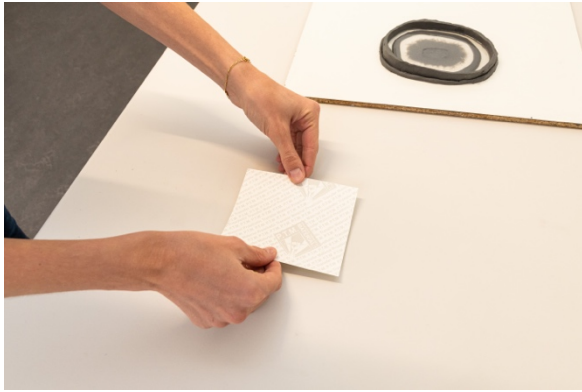
**13)** Coloured transfer.



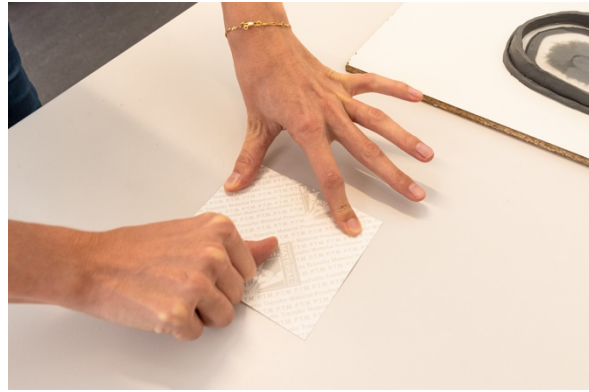
**14)** Raw and coloured transfer.



**15)** Preparing the transfer paper.



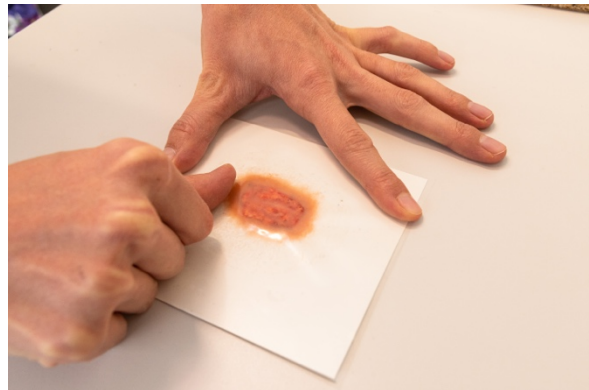
**16)** Placing the transfer paper on the transfer.



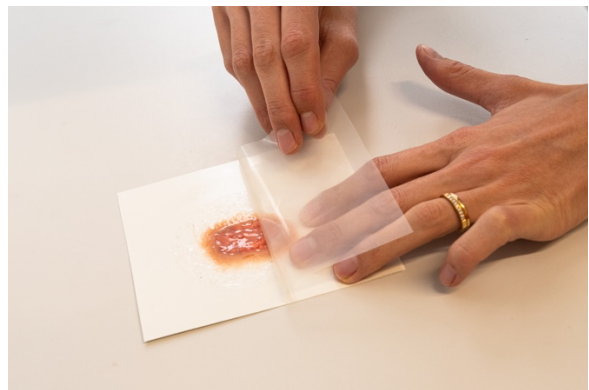
**17)** Apply pressure from the back.



**20)** The finished transfer on the SP's leg.



**18)** Apply pressure from the front.



**19)** Remove release film before applying on person.